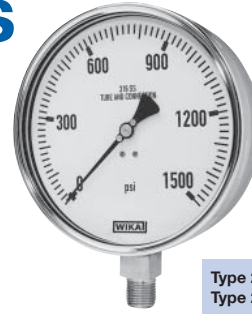


Industrial Gauges

Type 23X.50

- All Stainless Steel Construction
- Field Liquid Fillable
- Welded Case-to-Socket Connection



Type 232.50 - Dry case
Type 233.50 - Liquid filled case

The WIKA Type 23X.50 gauge offers a large dial, making it ideal to be read from a distance. The stainless steel wetted parts and case construction ensures a long service life in harsh applications. This gauge is used for chemical, oil exploration and production, power generation, and other applications requiring long lasting instrumentation.

Standard Features

- **Nominal Case Size:** 2½" (68 mm), 4" (100 mm), 4½" (115 mm), 6" (160mm)
- **Case Material:** 304 stainless steel
- **Wetted Parts:** 316L stainless steel
- **Window Type & Material:** Safety glass
- **Removable Window:** Yes, twist-off bayonet
- **Dial Material:** White aluminum
- **Bezel Ring Type & Material:** Twist-on bayonet ring - SS
- **Liquid Fillable Gauge:** Yes
- **Case-to-Socket O-ring Material:** No, welded
- **"Other" Gaskets/O-ring Types & Materials:** Window gasket, BUNA-N
- **Pointer Material/Type:** Black aluminum
- **Adjustable Pointer:** Yes
- **Accuracy:** (2½") ±2/1/2% of span ASME B40.100 Grade A;
(4", 4½" & 6") ±1% of span ASME B40.100 Grade 1A
- **Connection Locations:** LM (lower mount): all
CBM (center back mount): 2½",
LBM (lower back mount): 4", 4½" & 6"
- **Media Operating Temperature:** Max. 212°F
- **Ambient Operating Temperature:** -40°F to 140°F
dry; -4°F to 140°F glycerine case fill;
-40°F to 140°F- silicone case fill

Available Options

- "Dampened Movement" Option: Yes
- U-Clamp Bracket: Yes
- Front Flange: Yes
- Rear Flange: Yes (CBM and LBM only)
- Restrictor: Yes
- Non-Adjustable Pointer: Yes
- Instrument Glass Window (flat glass): Yes
- Drag Pointer (maximum reading indicator): Yes
- Cleaned for Use in Oxygen Service: Yes
- Panel Mount Kit: Yes (see front flange option)
- Magnetic or Inductive Contact Switches: Yes
- Receiver Gauge Scales: Yes
- Special Connection: Limited to wrench flat area

Note: For options not shown - consult your WIKA Distributor or the Factory.

Additional accessories available - see "Accessories" section in back of catalog

Datasheet: 23X.50

Type	232.50 (Dry)			
Datasheet	23X.50			
Size	2½"			
Conn. Size	¼" NPT			
Connection	LM		CBM	
Press. Scale¹	PSI	PSI/KG/CM²	PSI	PSI/KG/CM²
30" Hg	9110992		9110054	
30"-0-15 psi				
30"-0-30 psi				
30"-0-60 psi				
30"-0-100 psi				
30"-0-160 psi				
30"-0-200 psi				
15 psi	9111000		9110062	
30 psi	9111018		9110070	
60 psi	9111026		9110089	
100 psi	9111034		9110097	
160 psi	9111042		9110100	
200 psi	9111050		9110119	
300 psi	9111069		9110127	
400 psi	9111077		9110143	
600 psi	9111085		9110151	
800 psi				
1,000 psi	9111107		9110178	
1,500 psi	9111115		9110186	
2,000 psi	9111123		9110194	
3,000 psi	9111131		9110208	
5,000 psi	9111140		9110216	
10,000 psi	9111158		9110224	
15,000 psi	9111166		9110232	

Accessories (installed) Applies to any quantity when added to standard stock gauges

FF, SS	N/A	FF
RF, SS	RF	
Restrictor, 316 SS	R	
Glycerine filling Type 233.50	233.50	

Items without part numbers are available - consult factory.

Type	232.50 (Dry)			
Datasheet	23X.50			
Size	4"			
Conn. Size	½" NPT			
Connection	LM		LBM	
Press. Scale¹	PSI	PSI/KG/CM²	PSI	PSI/KG/CM²
30" Hg				
30"-0-15 psi				
30"-0-30 psi				
30"-0-60 psi				
30"-0-100 psi				
30"-0-160 psi				
30"-0-200 psi				
15 psi	9319492			
30 psi	9226860			
60 psi	9154671			
100 psi	9189459		50999452	
160 psi	9189467			
200 psi	9154701			
300 psi	9154710			
400 psi	9154728			
600 psi				
800 psi				
1,000 psi	9154752		50997591	
1,500 psi				
2,000 psi	9212744			
3,000 psi	9232087			
5,000 psi	9145664			
10,000 psi	9319506			
15,000 psi				
20,000 psi				

Accessories (installed)

Applies to any quantity when added to standard stock gauges

FF, SS	N/A	FF
RF, SS	RF	
Restrictor, 316 SS	R	
Glycerine filling Type 233.50	233.50	

Type	232.50 (Dry)			
Datasheet	23X.50			
Size	4½"			
Conn. Size	½" NPT			
Connection	LM		LBM	
Press. Scale¹	PSI	PSI/BAR	PSI	PSI/BAR
30" Hg	50474511		50474588	
30"-0-15 psi	50474529		50474596	
30"-0-30 psi	50474537		50474600	
30"-0-60 psi	50474545		50474618	
30"-0-100 psi	50474553		50474626	
30"-0-160 psi	50474561		50474634	
30"-0-200 psi	50474570		50474642	
15 psi	50474171		50474359	
30 psi	50474197		50474367	
60 psi	50474201		50474375	
100 psi	50474219		50474383	
160 psi	50474235		50474391	
200 psi	50474243		50474405	
300 psi	50474251		50474413	
400 psi	50474260		50474421	
600 psi	50474278		50474430	
800 psi	50474286		50474448	
1,000 psi	50474294		50474456	
1,500 psi	50474308		50474464	
2,000 psi	50474316		50474472	
3,000 psi	50474324		50474481	
5,000 psi	50474332		50474499	
10,000 psi	50474341		50474502	
15,000 psi	50474651		50474677	
20,000 psi	50474669		50474685	

Accessories (installed) Applies to any quantity when added to std. stock gauges

FF, SS	N/A	FF
RF, SS		RF
Restrictor, 316 SS		R
Glycerine Filled Type 233.50		233.50

Type	232.50 (Dry)				
Datasheet	23X.50				
Size	6"				
Conn. Size	½" NPT				
Connection	LM			LBM	
Press. Scale¹	PSI	PSI/BAR	PSI/KG/CM²	PSI	PSI/KG/CM²
30" Hg	4213688	4213939	4214072	4214218	
30"-0-15 psi	4213696			4214226	
30"-0-30 psi	4213700			4214234	
30"-0-60 psi	4213718			4214242	
30"-0-100 psi	4213726			4214251	
30"-0-160 psi	4213734			4214269	
30"-0-200 psi	4213742			4214277	
10 psi					
15 psi	4213751	4213947	4214081	4214285	
30 psi	4213769	4213955	4214099	4214293	
60 psi	4213777	4213963	4214102	4214307	4214455
100 psi	4213785	4213971	4214111	4214315	4214463
160 psi	4213793	4213981	4214129	4214323	4214471
200 psi	4213807		4214137	4214331	4214480
300 psi	4213815	4213999	4214145	4214340	4214498
400 psi	4213823			4214358	
600 psi	4213831	4214005	4214153	4214366	4214501
800 psi	4213840			4214374	
1,000 psi	4213858	4214013	4214161	4214382	4214510
1,500 psi	4213866	4214021		4214391	
2,000 psi	4213874		4214170	4214404	4214528
3,000 psi	4213882	4214030	4214188	4214412	4214536
5,000 psi	4213891	4214048	4214196	4214421	4214544
10,000 psi	4213904	4214056	4214200	4214439	4214552
15,000 psi	4213912	4214064		4214447	
20,000 psi	4213921			4214587	

Accessories (installed) Applies to any quantity when added to standard stock gauges

FF, SS	N/A	FF
RF, SS		RF
Restrictor, 316 SS		R
Glycerine Filled Type 233.50		233.50

¹"PSI/BAR" denotes dual scale; PSI outside in black, BAR inside in red. "PSI/KG/CM²" denotes dual scale; PSI outside in black, KG/CM² inside in red. Note: Vacuum scale: 30" Hg outside in black; 760 mm Hg inside in red.

Items without part numbers are available - consult factory.

Note: Stock items shown in **bold, blue** print.