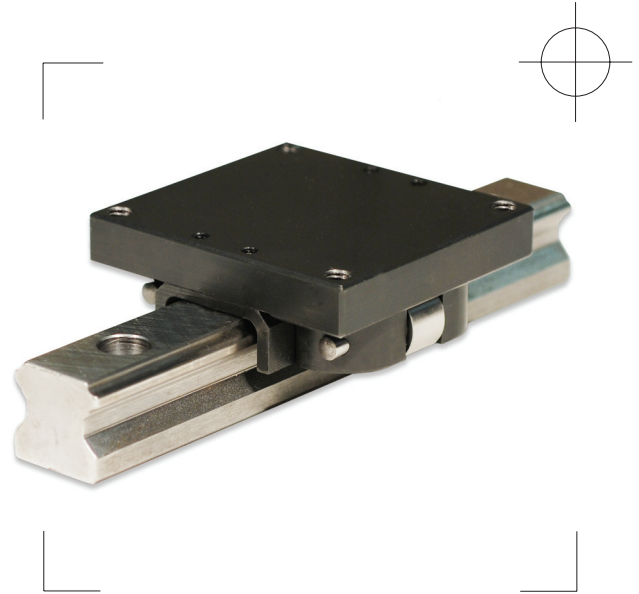


**Profile Rail Brake – RBR Series**  
**Fits 20, 25 and 35 mm Profile Guide Rails**

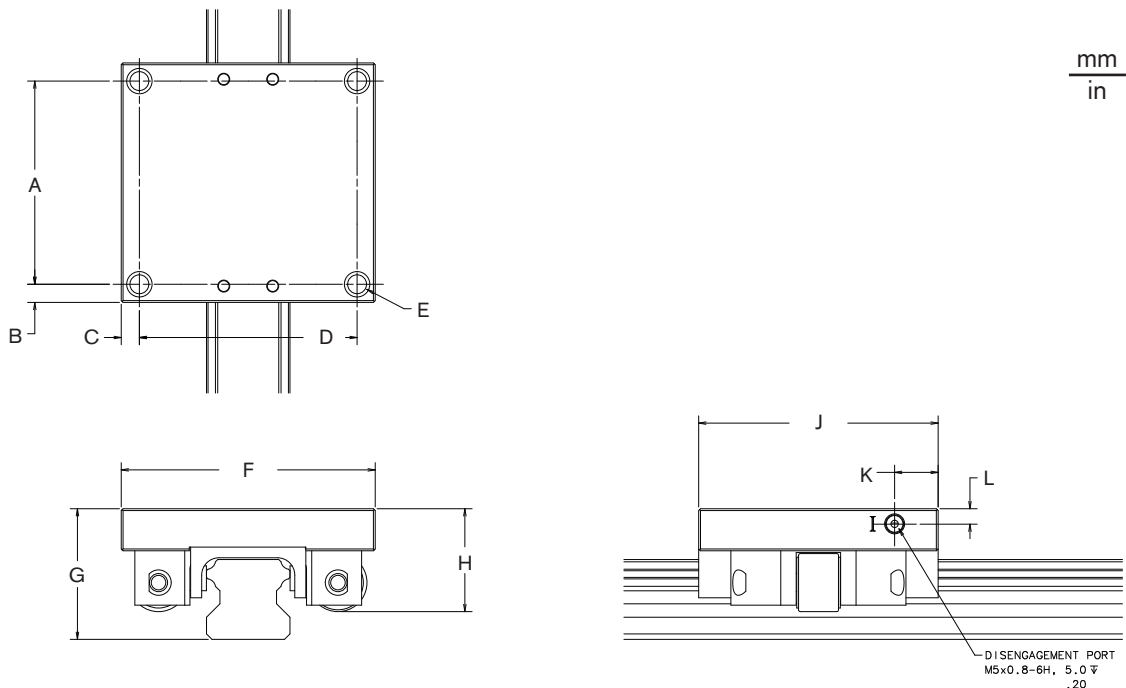
Nexen's RBR-series of Rail Brakes is a cost-effective solution for holding loads on guide rail systems. The spring-engaged, air-released brake is ideal for power-off applications, and clamps directly onto the center of the guide rail to provide positive holding in all axes.

The unique design uses a horizontal air/spring chamber to apply force on the rail through a wedge and roller mechanism, providing low backlash and accurate positioning. The RBR is engineered for dependable performance, easy setup and low maintenance.



- Spring engaged, air released for power-off and holding applications
- Low backlash for accurate positioning, while also providing stiffness and eliminating vibration in linear drives
- Low maintenance, due to fewer wear parts
- Field serviceable shoe replacement
- Easy to set up, no adjustments necessary
- Low release pressure, compatible with most plant air supplies
- Sized right to match bearing cassettes

# Profile Rail Brake – RBR Series, Approximate Dimensions



Model	A	B	C	D	E	F	G	H (Disengaged)	J	K	L
RBR20	62.00 [2.441]	5.00 [0.197]	5.13 [.202]	52.73 [2.076]	M6 x 1.00	63.0 ± .25 [2.48 ± .01]	30.00 [1.181]	22.76 [.896]	72.0 ± .03 [2.83 ± .01]	11.00 [.433]	4.02 [.158]
RBR25	56.00 [2.205]	5.00 [.197]	5.00 [.197]	60.00 [2.362]	M6 x 1.00	70.0 ± .3 [2.76 ± .01]	36.00 [1.417]	28.4 [1.12]	66.0 ± .3 [2.60 ± .01]	12.00 [.472]	4.26 [.168]
RBR35	100.29 [3.948]	6.50 [.256]	6.25 [.246]	87.50 [3.445]	M10 x 1.50	100.0 ± .3 [3.94 ± .01]	48.0 [1.89]	35.08 [1.381]	113.3 ± .3 [4.46 ± .01]	15.00 [.591]	3.72 [.146]

## Specifications

Model	Rated Holding Force N [lbs]	Backlash Full Holding Force	Release Pressure	Response Time	Approx. Weight kg [lbs]
RBR20	600 [135]	0.5 mm [0.020 in]	4 bar [60 psi]	69 msec	.45 [1.00]
RBR25	700 [157]	0.5 mm [0.020 in]	4 bar [60 psi]	69 msec	.47 [1.04]
RBR35	1150 [258]	0.5 mm [0.020 in]	4 bar [60 psi]	69 msec	1.65 [3.63]

## Product Numbers by Rail Type

Rail/Carriage Manufacturer	Rail Type	RBR20	RBR25	RBR35
THK	HSR	960630	960610	960650

Note: Nexen provides RBR-type rail brakes for other rail types by request. Call 800-843-7445 for application assistance.

In accordance with Nexen's established policy of constant product improvement, the specifications contained in this document are subject to change without notice. Technical data listed in this document are based on the latest information available at the time of printing and are also subject to change without notice. For current information, please consult [www.nexengroup.com](http://www.nexengroup.com)

# nexen®

Nexen Group, Inc.  
560 Oak Grove Parkway  
Vadnais Heights, MN 55127

800.843.7445  
Fax: 651.286.1099  
[www.nexengroup.com](http://www.nexengroup.com)

Nexen has sales offices throughout the United States, Europe, Japan, and Australia.